

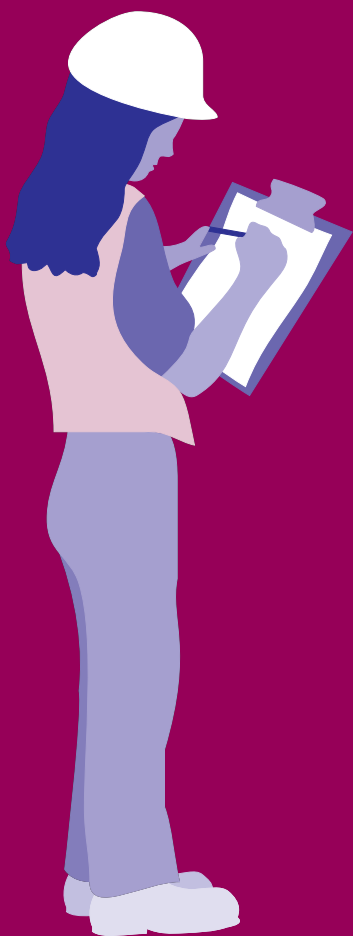
*Directory of*

# Lead Hazard

# REDUCTION

s e r v i c e s

*in the Bay Area*



*Produced by*  
The Alameda County  
Lead Poisoning Prevention Program

Third Edition



*Directory of*

# Lead Hazard Reduction Services

in the Bay Area

The Alameda County Lead Poisoning Prevention Program has surveyed state-certified lead professionals for the development of this resource booklet. The booklet is a partial list of state-certified lead-related construction professionals who can assist Bay Area homeowners with identification of lead hazards and lead-safe renovations. The booklet does not recommend any one professional over another. Our intent is to offer the homeowner a resource of names to contact for any lead-related work they may need associated with lead hazard identification, remediation or remodeling.

We encourage you to read the guidelines contained in the beginning of this booklet and to ask informed questions before hiring any contractor. This Directory only lists individuals and companies that are located in the 408, 415, 510, 650, and 925 area codes.

The information in this publication is believed to be accurate at the time of its production. The Alameda County Lead Poisoning Prevention Program assumes no responsibility for any damage that occurs from any action that is based on information found in this publication.






*Alameda County Lead Poisoning Prevention Program is a department of the Alameda County Community Development Agency. Our mission is to prevent childhood lead poisoning and other health related environmental problems. Call our Public Information Line at (510) 567-8280 for more information and services for property owners and families.*

Third Edition  
November 2002

Steven Schwartzberg, MPH, *Program Director*  
Adolph Martinelli, *Agency Director*

# Table of Contents

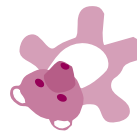
	Page
The problem with lead .....	1
What do I need to know first? .....	2
How to hire a lead professional .....	3
Types of lead hazard reduction professionals .....	6
 Local environmental labs .....	6
 Consultants .....	6
 Contractors .....	7
How to use this directory .....	8
List of local environmental labs .....	9
List of consultants .....	11
List of contractors .....	20
Resources .....	32

# The problem with lead...

Lead is the number one environmental health problem facing our children today. This view is shared by the U.S. Environmental Protection Agency (EPA), the Centers for Disease Control (CDC), and the U.S. Department of Health and Human Services (DHHS). The CDC estimates that up to 10 percent of all children may have unacceptably high levels of lead in their blood. New research suggests that a health threat exists even at very low exposures. Yet, while lead poisoning can cause permanent neurological damage and ongoing learning and behavioral problems, it is completely preventable.

The threat to our children from lead exposure is very real. Lead persists today in our soil, in the air and in our homes. Lead exposure crosses all social, economic and geographic lines. The most common source of lead poisoning is dust from deteriorating lead-based paint and unsafe renovations. Most homes built prior to 1978 contain at least some lead-based paint.

The key to preventing lead poisoning is knowledge; knowing what to do and what not to do. For example, deteriorating lead-based paint in a child's home is hazardous. However, removing it improperly can produce extremely high levels of hazardous lead dust. This Directory lists professionals who have been trained in safely identifying and reducing lead hazards and have received lead-certification by the State of California Department of Health Services (DHS).



## What do I need to know first?

- ◆ **The first thing you need to know is whether there are lead hazards in your home.** This can be determined by a *risk assessment* which involves taking samples of dust and soil, and testing any paint that is in poor condition. If, however, you are planning a major renovation or are going to disturb intact surfaces of paint, you may also want a *paint inspection*. A paint inspection gives you a reading of each type of paint in every room in the house, regardless of the condition. A risk assessment and/or paint inspection should be done by a lead certified *inspector/assessor*. Home test kits are available but they do not give you as much information and are not as accurate.
- ◆ **Next you need to know what to do if you have lead hazards.** A good risk assessment includes some information on how serious the risks are and what you can do to reduce them. If you need extensive work, you may decide to hire a lead certified *project designer* to write up a detailed work plan for you. Many project designers are also certified as *project monitors*, and can help you make sure the work gets done properly.
- ◆ **Finally, you need someone who can do the work.** Ideally this is a contractor who knows how to work safely on your house and has staff who are lead certified *supervisors* and *workers*. If you decide to do the work yourself, be sure you know how to do it safely! For more information call us at (510) 567-8280.



# How to hire a lead professional


Lead hazard remediation is a relatively new specialty and there are a limited but growing number of qualified lead professionals in the industry. There are several steps you can take to improve the chances of hiring someone who has the knowledge and experience to handle your job. The State Department of Health Services certifies construction workers to do lead related construction work and supervision as well as inspectors/risk assessors, project designers and project monitors. Individuals must also take continuing education to maintain their certification. For more information on State Certification, a complete list of certified individuals and to check for current status of individuals' certifications, you can call the State Department of Health Services at (800) 597-5323 or visit their website at [www.dhs.ca.gov/childlead](http://www.dhs.ca.gov/childlead).

## Credentials

All building contractors who work on your property are required to be licensed by the Contractors State License Board (unless the value of the work is less than \$1000, in most areas; check with your local permit office). Ask to see their pocket license and another form of identification. You can find out if the license is in good standing by logging onto [www.cslb.ca.gov](http://www.cslb.ca.gov) and performing a check by the contractor's name, business name, or license number. If you know the license number, you can also call the license board at (800) 321-2752.

If a contractor does lead related work, you should also determine if s/he has the appropriate lead certification. If they are lead certified, they should have a picture ID card from the State of California, Department of Health Services, with the words "Lead-Related Construction Certificate". The holder's name, the type of certification, certification number and expiration date will also be on the card. The certification number starts with the letter indicating the type of certification: for example I-127 is for Inspector/Assessor, D-127, for Project Designer, M-127 for Project Monitor, W-127 for Worker, and S-127 for Supervisor.

## Insurance

Ask the contractor if the company is insured against claims covering workers' compensation, property damage, personal liability and lead liability in case of accidents or lead exposures. Ask to see a copy of the certificate of insurance, or ask for the name of the contractor's insurance carrier and agency to verify that the contractor has insurance. In California, if a contractor has employees, workers' compensation insurance coverage is required by law. In this Directory, contractors who report that they carry lead liability insurance are indicated by: 

## Experience

Ask about experience relevant to the work you need done. Some contractors may be very experienced in commercial lead abatement work but lack the carpentry and painting experience necessary for doing a quality residential job. Ask for a list of former clients and call them. Find out if their projects were similar to the one you are planning. Ask questions like: “Did the contractor finish the job on schedule? Was the quality of the work acceptable? Was the contractor/supervisor responsive to your questions or concerns?”

## Details

Meet with the contractor when s/he comes to look at the job. The way a person examines the site can give you clues as to how they will perform on the job. Notice if they look at everything carefully, take notes, and ask questions. It may be an indication that they will plan well and pay attention to the details when they are doing the project. Ask the contractor what his/her plans are for containment, clean-up, worker protection, and disposal.



## Dust control

Dust from uncontained sanding, scraping, water blasting or flame torching of lead-based paint can be very hazardous to residents and workers and can contaminate your property. Uncontained paint removal is also now a violation under Title 17 of the California Code of Regulations. Regardless of whether or not they are certified, ask the contractor how they will minimize and contain the paint chips and dust. Will they put plastic sheeting down? What kinds of tools will they use? Will they use a HEPA vacuum to clean up when they are done? Don't be brushed off by vague assurances of high quality work.

## Contracts

Insist on a written contract that spells out in detail what will be done, the work schedule, the price and the terms of payment. Make sure that everything you want done is included and that both parties understand and agree on the scope of work. All payments should be scheduled after that portion of the work is completed, not before.



## Speak up

Pay attention to what is going on while the work is in progress. If you see things that look wrong, talk to the contractor about it right away. For example, if you think a painter is using the wrong color, it will be less of an issue if s/he knows about it early on instead of after half the house is painted. On the other hand, if it turns out you don't like the color you chose, you can change it before it gets too expensive to do so. Keep the lines of communication open so little problems don't become big ones.



# Types of lead hazard reduction professionals



## LOCAL ENVIRONMENTAL TESTING LABS

There may be circumstances where you just want to have one or two paint, soil or water samples analyzed for lead content. There are specific techniques that should be used in collecting samples in order for the results to be valid. Visit our website ([www.aclppp.org](http://www.aclppp.org)) or call the lab or our information line at (510) 567-8280 for more information. Once you have collected the sample, there are labs that can perform the analysis for you and tell you how much lead is in your sample. This sampling would be much more limited than a risk assessment or paint inspection performed by a certified professional. There is a list of some local labs on pages 11-12.



## CONSULTANTS

### Lead-certified inspector/risk assessor

Consultants have *inspectors/risk assessors* who can come to your home and do testing to identify lead hazards and/or lead-based paint.

A *risk assessment* is an onsite investigation for lead-based paint hazards which includes but is not limited to:

1. a visual inspection
2. limited environmental sampling of dust, soil, and deteriorated paint
3. a report of the results that includes recommendations for controlling any lead-based paint hazards.

A *paint inspection* is a surface by surface investigation to determine the presence of lead-based paint regardless of the condition of the paint. This is useful information if you plan to disturb intact painted surfaces during remodeling projects. A paint inspection does not necessary identify the presence of lead hazards.

Depending on your situation, you may need a combination paint inspection and risk assessment. Be clear about the difference before contracting for any lead inspection services.

*Clearance testing* is an onsite limited investigation assuring all lead reduction activities are complete. The clearance process includes a visual assessment and collection and analysis of environmental dust samples.



## CONSULTANTS *(cont'd)*

### Lead-certified project designer and project monitor

A *project designer* develops a work plan to implement lead hazard control measures. A *project monitor* oversees the construction project to insure compliance with all specifications and deals with contract issues.



## CONTRACTORS

The contractor performs construction work. They may be licensed as a general building contractor or a specialty contractor. General building contractors usually oversee projects and coordinate the subcontractors for a job. Specialty contractors are licensed to perform one type of work, like painting or plumbing, and often are hired as subcontractors by a general contractor.

The services each contractor performs is listed in this Directory. For example, the service listed as “environmental (asbestos/lead)” indicates that the company specializes in the identification and/or remediation of environmental hazards such as asbestos and lead. Other contractors perform services such as remodeling, painting, home maintenance and repair, window replacement, plastering, landscaping, soil removal, waste hauling, or other services. All contractors listed in this Directory have staff who are lead certified by the State of California. Contractors should maintain lead certification as *workers* and/or *supervisors*.

### Lead clean-up

Lead-certified contractors should be expected to minimize, contain, and clean-up all paint chips and dust. If work has been done in an unsafe manner in your home, ask the contractor to do a thorough clean-up. You can call our public information line at (510) 567-8280 for more information. You may also hire a lead-certified contractor to do clean-up of interior dust, exterior dust and/or paint chips. Contractors listed in this Directory who provide one or more of the specialized lead cleaning services are indicated by this symbol:



# How to use this directory

The Directory contains business names arranged alphabetically. Three sections are provided to assist you in locating appropriate resources:



**Local environmental labs**



**Consultants**



**Contractors**

Labs, consultants, and contractors provide services in the following area codes:

## **San Francisco, Marin, Peninsula Areas**

Area Codes: (415) (650)

## **East Bay: Contra Costa, Alameda Counties**

Area Codes: (510) (925)

## **South Bay: San Jose, Santa Clara**

Area Code: (408)

## **Guide to symbols:**



**Lead liability insurance:** indicates that the company reported that they carry lead liability insurance



**Lead clean-up:** indicates that the company offers interior lead dust and/or exterior dust and paint chips clean-up



**Languages:** indicates other languages that the company provides, in addition to English

## LOCAL ENVIRONMENTAL LABS

### Asbestos TEM Laboratories, Inc.



1409 Fifth St., Suite C  
Berkeley, CA 94710

*Years in business:* 13

*Service areas:* 408, 415, 510, 650, 925

*Services:* environmental (asbestos/lead),  
lab analysis

*Languages:* Spanish, Chinese, Tagalog

*Contact:* Mark Bailey, President

*Phone:* (510) 528-0108

*Fax:* (510) 528-0109

*E-mail:* MBaileyASB@aol.com

*Website:* www.asbestosTEMLabs.com

### Calcoast Labs, Inc.



4072 Watts St.  
Emeryville, CA 94608

*Years in business:* 20

*Service areas:* 408, 415, 510, 650, 925

*Services:* environmental (asbestos/lead), lab analysis

*Languages:* Cantonese, Mandarin

*Contact:* D. Patrick Fairley, Lab Director

*Phone:* (510) 652-2979

*Fax:* (510) 652-3085

*E-mail:* www.ccoastlabs@aol.com

*Website:* www.calcoastlabs.com

### Forensic Analytical



3777 Depot Rd., #409  
Hayward, CA 94545

*Years in business:* 16

*Service areas:* 408, 415, 510, 650, 925

*Services:* environmental (asbestos/lead),  
risk assessment/paint inspection,  
lab analysis, mold assessment

*Languages:* Spanish

*Contact:* John Watson,

Dir. Sales & Marketing

*Phone:* (510) 887-8828

*Fax:* (510) 887-4218

*E-mail:* info@forensica.com

*Website:* www.forensica.com

### Kellco Services, Inc.



3137 Diablo Ave.  
Hayward, CA 94545

*Years in business:* 15

*Service areas:* 408, 415, 510, 650, 925

*Services:* environmental (asbestos/lead),  
risk assessment/paint inspection,  
lab analysis, mold, indoor air quality

*Contact:* Tim Cannard, VP, Sr. Project Mngr.

*Phone:* (510) 786-9751

*Fax:* (510) 786-9625

*E-mail:* mailbox@kello.com

*Website:* www.kellco.com



### **Macs Lab, Inc.**



2070A Walsh Ave.  
Santa Clara, CA 95050

*Years in business:* 14

*Service areas:* 408, 415, 510, 650, 925

*Services:* environmental (asbestos/lead),  
risk assessment/paint inspection,  
lab analysis

*Languages:* Hindi

*Contact:* Maheen B. Doctor,  
Director of Field Services

*Phone:* (408) 727-9727

*Fax:* (408) 654-3951

*E-mail:* mdoctor@macslab.com

*Website:* www.macslab.com

### **Micro Analytical Laboratories, Inc.**



5900 Hollis St., Suite M  
Emeryville, CA 94608

*Years in business:* 13

*Service areas:* 408, 415, 510, 650, 925

*Services:* lab analysis

*Contact:* John Ayou, Business Mngr.

*Phone:* (510) 653-0824

*Fax:* (510) 653-1361

*E-mail:* johnayou@yahoo.com

*Website:* www.labmicro.com

### **Protech Consulting & Engineering**



1755 E. Bayshore Rd., #14B  
Redwood City, CA 94063

*Service areas:* 408, 415, 510, 650, 925

*Services:* environmental (asbestos/lead),  
risk assessment/paint inspection,  
lab analysis, mold testing/inspection,  
environmental site assessments (phase I & II)

*Languages:* Spanish

*Contact:* Ron Mason, Director

*Phone:* (800) 559-8324

*Fax:* (650) 569-4023

### **RJ Lee Group, Inc.**

530 McCormick St.  
San Leandro, CA 94577

*Years in business:* 22

*Service areas:* 408, 415, 510, 625, 925

*Services:* lab analysis

*Contact:* Dr. Ben Schiefelbein,  
Sr. Technical Sales Consultant

*Phone:* (510) 567-0480

*E-mail:* bschiefelbein@rjlg.com

*Website:* www.rjlg.com

## CONSULTANTS

### AEI Consultants



3210 Old Tunnel Rd., Suite B  
Lafayette, CA 94549

*Years in business:* 11

*Service areas:* 408, 415, 510, 650, 925

*Services:* environmental (asbestos/lead),  
risk assessment, environmental engineering  
and remediation

*Contact:* Nick Walchuk, Operations Mngr .

*Phone:* (925) 283-6000

*Fax:* (925) 283-6121

*E-mail:* walchuk@aeiconsultants.com

*Website:* www.aeiconsultants.com

### Bechtel National



50 Beale St.; 50/11/B75  
San Francisco, CA 94105

*Years in business:* 103

*Service areas:* 408, 415, 510, 650, 925

*Services:* environmental (asbestos/lead),  
risk assessment, engineering,  
project management

*Languages:* Spanish, Cantonese, Mandarin

*Contact:* Norm Black, ESH

Special Project Manager

*Phone:* (415) 768-3590

*Fax:* (415) 768-1794

*E-mail:* nblack@bechtel.com

*Website:* www.bechtel.com

### Benchmark



3732 Charter Park Dr., Suite A  
San Jose, CA 95136

*Years in business:* 9

*Service areas:* 408, 415, 510, 650, 925

*Services:* environmental (asbestos/lead),  
risk assessment/paint inspection

*Languages:* Spanish

*Contact:* Wendy Buller,

Chief Marketing Officer

*Phone:* (408) 448-7594

(800) 988-7424 toll free

*Fax:* (408) 448-3849

*E-mail:* wlb@benchmark-inspections.com

*Website:* www.benchmark-inspections.com

### C & C Environmental Group



440 Ringwood Ave.  
Menlo Park, CA 94025

*Service areas:* 415, 650

*Services:* environmental (asbestos/lead),  
risk assessment/paint inspection, surveys

*Languages:* Greek

*Contact:* Chris Zouboulakis,

Project Manager, Principal

*Phone:* (650) 322-6062

*Fax:* (707) 982-1881

*E-mail:* czebra@yahoo.com

**Cal Inc.**

2040 Peabody Rd.  
Vacaville, CA 95687

*Years in business:* 20+

*Service areas:* 408, 415, 510, 650, 925

*Services:* environmental (asbestos/lead),  
remodeling, painting,  
window replacement, soil removal,  
risk assessment/paint inspection,  
waste hauling

*Performs lead clean-up work:* interior dust,  
exterior dust and paint chips

*Languages:* Spanish

*Contact:* David Esparza, Owner

*Phone:* (707) 446-7996

*Fax:* (707) 446-4906

*E-mail:* desparza@cal-inc.com

*Website:* www.cal-inc.com

**Cal-Lead**

326 Alta Ave.  
Santa Cruz, CA 95060

*Years in business:* 7

*Service areas:* 408, 415, 510, 650, 831, 925

*Services:* environmental (asbestos/lead), remodeling,  
window replacement,  
risk assessment/paint inspection

*Performs lead clean-up work:* interior dust

*Languages:* Spanish

*Contact:* Noel Benson, Owner

*Phone:* (831) 469-4707

*E-mail:* Debnoel@cruzio.com

*Website:* www.cal-lead.com

**Carlos Azcona**

7881 Lovers Ln.  
Hollister, CA 95023

*Years in business:* 1

*Service areas:* 408, 831

*Services:* risk assessment/paint inspection

*Languages:* Spanish

*Contact:* Carlos Azcona, Owner

*Phone:* (831) 635-9468

*E-mail:* c.walnut@netzero.com



## Construction Management Systems

1117 So. B St., Suite #8  
San Mateo, CA 94401

*Years in business:* 17

*Service areas:* 415, 650 (not in Marin)

*Services:* construction management

*Contact:* Lou Janakos, Owner

*Phone:* (650) 342-5888

*Fax:* (650) 342-1195

*E-mail:* cmsjanakos@aol.com

## Entox & Assoc.

132 Del Casa Dr.  
Mill Valley, CA 94941

*Years in business:* 6

*Service areas:* 415, 510, 650, 925

*Services:* environmental (asbestos/lead),  
risk assessment/paint inspection

*Contact:* Rudy Von Burg, Principal

*Phone:* (415) 383-0271

*Fax:* (415) 383-0271

*E-mail:* rvonburg@aol.com

*Website:* www.entoxassoc.com

## Environmental Innovations Corporation



8301 Edgewater Dr. #210  
Oakland, CA 94621

*Years in business:* 17

*Service areas:* 408, 415, 510, 650, 925, 209, 916

*Services:* environmental (asbestos/lead),  
risk assessment/paint inspection,  
mold inspection, evaluation & management,  
restoration and construction management,  
phase I and II site assessment, sampling  
and evaluation

*Languages:* Spanish, Persian/Farsi, German

*Contact:* Farshid Salamati,  
Technical Director

*Phone:* (510) 632-0104

(888) 932-0104 toll free

*Fax:* (510) 728-0590

*E-mail:* eic@4safetyusa.com

## Environmental Technical Services, Inc.



124 Washington Ave. #A  
Richmond, CA 94801

*Service areas:* 408, 415, 510, 650, 925

*Services:* environmental (asbestos/lead),  
risk assessment/paint inspection

*Contact:* Kody Khodayari, Principal

*Phone:* (510) 234-1221

*Fax:* (510) 234-0404

*E-mail:* ETSofCA@aol.com

**EnviroScience, Inc.**

2220 S. Bascom Ave.  
Campbell, CA 95008

*Years in business:* 10

*Service areas:* 408, 415, 510, 650, 925

*Services:* environmental (asbestos/lead),  
risk assessment/paint inspection

*Contact:* Hooman Sotoodeh, PhD, PE,  
Principal

*Phone:* (408) 371-4181

*Website:* [www.enviroscience-inc.com](http://www.enviroscience-inc.com)

**Forensic Analytical**

3777 Depot Rd., #409  
Hayward, CA 94545

*Years in business:* 16

*Service areas:* 408, 415, 510, 650, 925

*Services:* environmental (asbestos/lead),  
risk assessment/paint inspection,  
lab analysis, mold assessment

*Languages:* Spanish

*Contact:* John Watson,  
Dir. of Sales & Marketing

*Phone:* (510) 887-8828

*Fax:* (510) 887-4218

*E-mail:* [info@forensica.com](mailto:info@forensica.com)

*Website:* [www.forensica.com](http://www.forensica.com)

**Hazard Management Services, Inc. (HMS, Inc.)**

367 Civic Dr., Suite 7  
Pleasant Hill, CA 94523

*Years in business:* 19+

*Service areas:* 408, 415, 510, 650, 925

*Services:* environmental (asbestos/lead),  
risk assessment/paint inspection, mold,  
toxics, safety

*Contact:* Tom Wangerin,  
Regional Manager

*Phone:* (925) 363-3442

*Fax:* (925) 363-7897

*E-mail:* [Twangerin@softcom.net](mailto:Twangerin@softcom.net)

**Hazardous Materials Assessment, Inc.**

1933 Davis St., Suite 303  
San Leandro, CA 94577

*Years in business:* 17

*Service areas:* 408, 415, 510, 650, 925

*Services:* environmental (asbestos/lead)

*Contact:* Scott W. Compton, President

*Phone:* (510) 638-4801

*E-mail:* [compton@asbestos.org](mailto:compton@asbestos.org)

*Website:* [www.asbestos.org](http://www.asbestos.org)

### Hygienetics Environmental



2433 Mariner Square Loop, Suite 210  
Alameda, CA 94501

*Years in business:* 21

*Service areas:* 415, 510, 650, 925

*Services:* environmental (asbestos/lead),  
risk assessment, paint inspection

*Contact:* Kris McCormick, Regional Director

*Phone:* (510) 749-1003

*Fax:* (510) 749-1069

*E-mail:* kris.mccormick@hygienetics.com

*Website:* www.hygienetics.com

### IHI Environmental

1260 45<sup>th</sup> St., Suite L  
Emeryville, CA 94608

*Years in business:* 22

*Service areas:* 408, 415, 510, 650, 925

*Services:* environmental (asbestos/lead),  
risk assessment/paint inspection

*Contact:* David B. McGrath, Program Mngr.  
Asbestos/Lead Paint Services

*Phone:* (510) 923-1661

*Fax:* (510) 923-1468

*E-mail:* mcgrath@ihi-env.com

*Website:* www.ihi-env.com

### Jason Garrison

1321 San Bruno Ave.  
San Francisco, CA 94110

*Years in business:* 10

*Service areas:* 408, 415, 510, 650, 925

*Services:* environmental (asbestos/lead),  
risk assessment/paint inspection

*Contact:* Jason Garrison,  
Environmental Project Manager

*Phone:* (415) 285-2058

*E-mail:* bluetuliptheband@yahoo.com

### Kellco Services, Inc.



3137 Diablo Ave.  
Hayward, CA 94545

*Years in business:* 15

*Service areas:* 408, 415, 510, 650, 925

*Services:* environmental (asbestos/lead),  
risk assessment/paint inspection,  
lab analysis, mold, indoor air quality

*Contact:* Tim Cannard, VP, Sr. Project Mngr.

*Phone:* (510) 786-9751

*Fax:* (510) 786-9625

*E-mail:* mailbox@kello.com

*Website:* www.kellco.com

**Ken Robinson Consulting**

7799 Lilac Way  
Cupertino, CA 95014

*Years in business:* 10

*Service areas:* 408, 650

*Services:* environmental (lead),  
risk assessment/paint inspection,  
clearance inspection

*Contact:* Kenneth W. Robinson,  
MPH, REHS

*Phone:* (408) 255-4498

*Cell:* (650) 255-1764

*E-mail:* kwrobinson1@excite.com

**Lead Education & Detection**

3380 20<sup>th</sup> St. #102  
San Francisco, CA 94110

*Years in business:* 2

*Service areas:* 408, 415, 510, 650, 925

*Services:* environmental (asbestos/lead)  
risk assessment/paint inspection, lab analysis

*Contact:* Diana Elrod, Owner

*Phone:* (415) 648-1600

*Fax:* (415) 550-7448

*E-mail:* Info@L-E-A-D.net

**LFR Levine Fricke**

1900 Powell St., Suite 1200  
Emeryville, CA 94608

*Years in business:* 20

*Service areas:* 408, 415, 510, 650, 925

*Services:* environmental (asbestos/lead),  
soil removal,  
risk assessment/paint inspection

*Contact:* Michael Doherty,  
Lead Technician

*Phone:* (510) 652-4500

*Fax:* (510) 652-4906

*E-mail:* mike.doherty@LFR.com

*Website:* www.lfr.com

**Macs Lab, Inc.**

2070A Walsh Ave.  
Santa Clara, CA 95050

*Years in business:* 14

*Service areas:* 408, 415, 510, 650, 925

*Services:* environmental (asbestos/lead),  
risk assessment/paint inspection,  
lab analysis

*Languages:* Hindi

*Contact:* Maheen B. Doctor,  
Director of Field Services

*Phone:* (408) 727-9727

*Fax:* (408) 654-3951

*E-mail:* mdoctor@macslab.com

*Website:* www.macslab.com

## NorBay Consulting



2563 Heatherstone Dr.  
San Rafael, CA 94903

*Years in business:* 3

*Service areas:* 415, 510, 650, 925

*Services:* environmental (asbestos/lead),  
risk assessment/paint inspection

*Contact:* Bob Gerhold

*Phone:* (415) 507-9786

*Fax:* (415) 507-9760

*E-mail:* rohold@attbi.com

## Occupational Knowledge



1255 Post St. #927  
San Francisco, CA 94109

*Years in business:* 15

*Service areas:* 408, 415, 510, 650, 925

*Services:* environmental (asbestos/lead),  
risk assessment/paint inspection,  
lead/asbestos training

*Contact:* Perry Gottesfeld

*Phone:* (415) 441-5199

*Fax:* (415) 441-5767

## Peanuts for Painting! A California Corporation



6144 Valley View Rd.  
Oakland, CA 94611

*Years in business:* 21

*Service areas:* 408, 415, 510, 650, 925

*Services:* environmental (asbestos/lead),  
remodeling, painting,  
home maintenance & repair, waterproofing

*Performs lead clean-up work:* interior dust,  
exterior dust and paint chips

*Languages:* Spanish, Arabic

*Contact:* Fred J. Schmidt, President

*Phone:* (415) 346-7107

*Fax:* (510) 338-0092

*E-mail:* fstpnut@aol.com

## Pinnacle Environmental



P.O. Box 194104  
San Francisco, CA 94119

*Years in business:* 6

*Service areas:* 408, 415, 510, 650, 925

*Services:* environmental (asbestos/lead),  
risk assessment/paint inspection

*Contact:* Stuart Smith, Principal

*Phone:* (415) 831-8416

*Fax:* (415) 831-8461

*E-mail:*

stusmith@pinnacle-environmental.com

*Website:*

www.pinnacle-environmental.com

**Protech Consulting & Engineering**

1755 E. Bayshore Rd., #14B  
Redwood City, CA 94063

*Contact:* Ron Mason, Director

*Phone:* (800) 559-8324

*Fax:* (650) 569-4023

*Years in business:* 15

*Service areas:* 408, 415, 510, 650, 925

*Services:* environmental (asbestos/lead),  
risk assessment/paint inspection,  
lab analysis, mold testing/inspection,  
environmental site assessments (phase I and II)

*Languages:* Spanish

**RGA Environmental**

4701 Doyle St. #14  
Emeryville, CA 94608

*Contact:* Harry Lawrence,  
Dir. of Business Dev.

*Phone:* (510) 547-7771

*Fax:* (510) 547-1983

*E-mail:* harry@rgaenv.com

*Website:* www.rgaenv.com

*Years in business:* 16

*Service areas:* 408, 415, 510, 650, 925

*Services:* risk assessment/paint inspection

**Sensible Environmental Solutions, Inc.**

1704 Alhambra Ave.  
Martinez, CA 94553

*Contact:* Mitch Edwards,  
Sr. Indust. Hygienist

*Phone:* (925) 370-9737

*Fax:* (925) 370-1453

*E-mail:* ses2@earthlink.net

*Website:* www.sensibleinc.net

*Years in business:* 7

*Service areas:* 408, 415, 510, 650, 925

*Services:* environmental (asbestos/lead),  
risk assessment/paint inspection

**Sequoia Environmental**

900 Murmansk St., Suite 1B  
Oakland, CA 94607

*Contact:* Chris 'Wabuzoh, Principal

*Phone:* (510) 663-2912

*Fax:* (510) 663-2914

*E-mail:* sequoiaenv@aol.com

*Years in business:* 9

*Service areas:* 408, 415, 510, 650, 925

*Services:* environmental (asbestos/lead),  
risk assessment/paint inspection

### Stan Reynolds Consulting



543 Andover St.  
San Francisco, CA 94110

*Years in business:* 5

*Service areas:* 408, 415, 510, 650, 925

*Services:* risk assessment/paint inspection

*Contact:* Stan Reynolds

*Phone:* (415) 412- 2066

*Fax:* (415) 648-7193

*E-mail:* Stan543And@aol.com

### Sterling & Associates, Inc.



168 South Hillview Dr.  
Milpitas, CA 95035

*Years in business:* 13

*Service areas:* 408, 415, 510, 650,  
707, 925

*Services:* environmental (asbestos/lead),  
risk assessment/paint inspection,  
industrial hygiene, indoor air quality,  
mold/fungi consulting

*Languages:* Spanish, Mandarin, Vietnamese

*Contact:* Richard Krentz, CIH, President

*Phone:* (408) 262-1656

*Fax:* (408) 262-5902

*E-mail:* krentz@rsterling.com

*Website:* www.rsterling.com

### Twegbe, Inc.



197 Highland Ave.  
San Francisco, CA 94110

*Years in business:* 5

*Service areas:* 408, 415, 510, 650, 925

*Services:* environmental (asbestos/lead),  
risk assessment/paint inspection,  
consultant, lead wipe clearance

*Contact:* Sorbor Twegbe, Project Manager

*Phone:* (415) 285-3522

*Fax:* (415) 285-2960

*E-mail:* stwegbe@aol.com

### Vantage Point Environmental



3020 Rose St.  
Martinez, CA 94553

*Years in business:* 10+

*Service areas:* 408, 415, 510, 650, 925

*Services:* environmental (asbestos/lead),  
risk assessment/paint inspection,  
consulting and project design

*Contact:* Burt Olhiser, CPE, CAC, Principal

*Phone:* (925) 229-2990

*Fax:* (925) 229-4389

*Cell:* (925) 383-1699

*E-mail:* bolhiser@aol.com

## CONTRACTORS

### 3K's Hauling & Waste Removal

1479 12<sup>th</sup> St.  
Oakland, CA 94607

*Years in business:* 1

*Service areas:* 415, 510, 650, 925

*Services:* home maintenance & repair, waste hauling

*Contact:* Kelvin Butler Sr., Owner

*Phone:* (510) 834-9700

*Fax:* (510) 839-6427

*E-mail:* singlefatheroftwo@sbcglobal.net

### Alexander A. Construction



23220 Sally Court  
Hayward, CA 94541

*Years in business:* 20

*Service areas:* 415, 510, 650, 925

*Services:* environmental (asbestos/lead), remodeling,  
painting, home maintenance & repair,  
window replacement, waste hauling

*Performs lead clean-up work:* interior dust,  
exterior dust and paint chips

*Contact:* Author Alexander, Owner

*Phone:* (510) 889-8128

*Fax:* (510) 889-8128

### Atlas Bay City Company, Inc.



1797 Yosemite Ave.  
San Francisco, CA 94124

*Service areas:* 408, 415, 510, 650, 925

*Services:* environmental (asbestos/lead),  
painting, risk assessment/paint inspection

*Performs lead clean-up work:* interior dust,  
exterior dust and paint chips

*Languages:* Spanish, Cantonese, Mandarin

*Contact:* Keith C. Hawkins, President

*Phone:* (415) 822-6520

*Fax:* (415) 822-6521

*E-mail:* AtlasBig9@aol.com

*Website:* www.atlasbaycity.com

### Bay Area Painting



4061 East Castro Valley Blvd. #154  
Castro Valley, CA 94552

*Years in business:* 30

*Service areas:* 408, 415, 510, 650, 925

*Services:* environmental (asbestos/lead), painting

*Performs lead clean-up work:* interior dust,  
exterior dust and paint chips

*Languages:* Spanish

*Contact:* Philip Bass, Owner

*Phone:* (510) 337-9841

(800) 914-5554 toll free

*Fax:* (510) 337-9849

*E-mail:* phil@bayareapainting.com

*Website:* www.bayareapainting.com



## Bay View Environmental Services



1366 Doolittle Dr.  
San Leandro, CA 94577

*Years in business:* 9

*Service areas:* 408, 415, 510, 625, 925

*Services:* environmental (asbestos/lead),  
demolition, scaffolding, waste hauling

*Performs lead clean-up work:* interior dust,  
exterior dust and paint chips

*Languages:* Spanish

*Contact:* Richard Cleveland

*Phone:* (510) 562-6181

*Fax:* (510) 562-6182

*E-mail:*

rcleveland@bayview-environmental.com

*Website:*

www.bayview-environmental.com

## Bluewater Services, Inc.



2075 Williams St.  
San Leandro, CA 94577

*Years in business:* 12

*Service areas:* 408, 415, 510, 650, 925

*Services:* environmental (asbestos/lead),  
soil removal, waste hauling, mold,  
interior demolition

*Performs lead clean-up work:* interior dust,  
exterior dust and paint chips

*Languages:* Spanish

*Contact:* Chris Kirschenheuter, President

*Phone:* (510) 346-8800

(800) 536-6702 toll free

*Fax:* (510) 346-8923

*E-mail:* chris@bwserv.com

*Website:* www.bwserv.com

## Cal Inc.



2040 Peabody Rd.  
Vacaville, CA 95687

*Years in business:* 20+

*Service areas:* 408, 415, 510, 650, 925

*Services:* environmental (asbestos/lead),  
remodeling, painting,  
window replacement, soil removal,  
risk assessment/paint inspection  
waste hauling

*Performs lead clean-up work:* interior dust,  
exterior dust and paint chips

*Languages:* Spanish

*Contact:* David Esparza, Owner

*Phone:* (707) 446-7996

*Fax:* (707) 446-4906

*E-mail:* desparza@cal-inc.com

*Website:* www.cal-inc.com



### Cal-Lead



326 Alta Ave.  
Santa Cruz, CA 95060

*Years in business:* 7

*Service areas:* 408, 415, 510, 650, 831, 925

*Services:* environmental (asbestos/lead),  
remodeling, window replacement,  
risk assessment/paint inspection

*Performs lead clean-up work:* interior dust

*Languages:* Spanish

*Contact:* Noel Benson, Owner

*Phone:* (831) 469-4707

*E-mail:* debnoel@cruzio.com

*Website:* www.cal-lead.com

### Citywide Painting



2601 Adeline St. #180  
Oakland, CA 94607

*Years in business:* 12

*Service areas:* 415, 510, 650, 925

*Services:* painting

*Performs lead clean-up work:* interior dust,  
exterior dust and paint chips

*Languages:* Korean

*Contact:* Jae Kim, Owner

*Phone:* (510) 444-0645

*Fax:* (510) 444-0648

*E-mail:* Jaekim7676@aol.com

### Construction Management Systems

1117 So. B St., Suite #8  
San Mateo, CA 94401

*Years in business:* 17

*Service areas:* 415, 650 (not in Marin)

*Services:* construction management

*Contact:* Lou Janakos, Owner

*Phone:* (650) 342-5888

*Fax:* (650) 342-1195

*E-mail:* cmsjanakos@aol.com

### CST Environmental



15007 Wicks Blvd.  
San Leandro, CA 94577

*Years in business:* 12

*Service areas:* 408, 415, 510, 650, 925

*Services:* environmental (asbestos/lead),  
soil removal, demolition

*Performs lead clean-up work:* interior dust,  
exterior dust and paint chips

*Languages:* Spanish

*Contact:* Trent Michels, Vice President

*Phone:* (510) 357-8971

*Fax:* (510) 357-9806

*E-mail:* tmichels@cstenv.com

*Website:* www.cstenv.com

## Doherty Painting & Construction, Inc.



880 Innes Ave.  
San Francisco, CA 94124

*Years in business:* 17

*Service areas:* 408, 415, 510, 650, 925

*Services:* environmental (asbestos/lead), remodeling,  
painting, home maintenance & repair,  
window replacement, plastering,  
waste hauling

*Performs lead clean-up work:* interior dust,  
exterior dust and paint chips

*Languages:* Spanish

*Contact:* Lisa Becker, Office Manager

*Phone:* (415) 695-1494

*Fax:* (415) 695-1499

*E-mail:* dohertyest@aol.com

*Website:* www.dohertypaint-const.com

## East Bay Unlimited Services



6201 Hillmont Dr.  
Oakland, CA 94605

*Years in business:* 10

*Service areas:* 510, 925

*Services:* painting, minor interior and exterior repair

*Performs lead clean-up work:* interior dust,  
exterior dust and paint chips

*Contact:* Mark Germann

*Phone:* (510) 568-6763

*Fax:* (510) 562-5445

## Eddie's Painting



3145 Geary Blvd. #452  
San Francisco, CA 94118

*Service areas:* 415, 510, 707 (Sonoma)

*Services:* environmental (asbestos/lead),  
remodeling, painting,  
home maintenance & repair

*Performs lead clean-up work:* interior dust,  
exterior dust and paint chips

*Contact:* Edward Krukowski

*Phone:* (415) 406-6141  
(415) 407-4757

*Fax:* (707) 781-3862

*E-mail:* info@eddiespainting.com

*Website:* www.eddiespainting.com



### Environmental Asbestos-Lead-Mold

8400 Enterprise Way, Rm. #119  
Oakland, CA 94621



*Years in business:* 18  
*Service areas:* 408, 415, 510, 650, 925  
*Services:* environmental (asbestos/lead)  
*Performs lead clean-up work:* interior dust,  
exterior dust and paint chips  
*Languages:* Spanish

*Contact:* Jerry Rodarte, Business Mngr.  
Secretary, Treasurer

*Phone:* (510) 569-4761

*Fax:* (510) 569-4763

### Environmental Innovations Corp.

8301 Edgewater Dr. #210  
Oakland, CA 94621



*Years in business:* 17  
*Service areas:* 408, 415, 510, 650, 925, 209, 916  
*Services:* environmental (asbestos/lead),  
risk assessment/paint inspection,  
mold inspection,  
evaluation and management,  
restoration and construction management,  
phase I and II site assessment and  
sampling and evaluation

*Languages:* Spanish, German, Persian/Farsi

*Contact:* Farshid Salamati,  
Technical Director

*Phone:* (510) 632-0104  
(888) 932-0104 toll free

*Fax:* (510) 728-0590

*E-mail:* Eic@4safetyUSA.com

### Flying Colors

1209 Arguello Blvd.  
San Francisco, CA 94122



*Years in business:* 20  
*Service areas:* 415, 510, 650  
*Services:* painting, home restoration and repair,  
window replacement  
*Performs lead clean-up work:* interior dust,  
exterior dust and paint chips  
*Languages:* Spanish

*Contact:* Steven Mongan, Owner

*Phone:* (415) 564-4500

*Fax:* (415) 564-4500

*E-mail:* lead@flyingcolors.com

## Greg Daigian Painting & Construction



2600 Cabrillo St.  
San Francisco, CA 94121

*Contact:* Greg Daigian, Owner  
*Phone:* (415) 386-1121

*Years in business:* 25

*Service areas:* 415, 510, 650, 925

*Services:* remodeling, painting, window replacement, plastering

*Performs lead clean-up work:* interior dust,  
exterior dust and paint chips

## Honest Olee Wades Painting & Decorating & Lead Abatement



2800 Delaware St.  
Oakland, CA 94602

*Contact:* Mr. Olee Wade,  
Sole Proprietor

*Phone:* (510) 482-4342

*Fax:* (510) 482-4342

*Years in business:* 13

*Service areas:* 408, 415, 510, 650, 925

*Services:* environmental (asbestos/lead),  
painting, mold remediation

*Performs lead clean-up work:* interior dust,  
exterior dust and paint chips

## J & R Painting



111 Middlefield Dr.  
San Francisco, CA 94132

*Contact:* Michael J. Ruggiero

*Phone:* (415) 661-8392

*Fax:* (650) 757-5815

*Years in business:* 22

*Service areas:* 408, 415, 510, 650, 925

*Services:* environmental (asbestos/lead), remodeling, painting,  
home maintenance & repair, waterproofing

*Performs lead clean-up work:* interior dust,  
exterior dust and paint chips

## J's Construction



4941 Antioch Loop  
Union City, CA 94587

*Contact:* Julius Kuruc, Owner

*Phone:* (510) 441-9035

*Fax:* (510) 441-9035

*E-mail:* jsconstr@aol.com

*Website:* www.jsconstructionbuild.com

*Years in business:* 2

*Service areas:* 510, 925

*Services:* environmental (asbestos/lead),  
painting, home maintenance & repair,  
window replacement

*Languages:* Slovak, Hungarian



### Janus Corporation



1081 Shary Cir.  
Concord, CA 94518

*Years in business:* 13

*Service areas:* 408, 415, 510, 650, 925

*Services:* environmental (asbestos/lead),  
soil removal, waste hauling,  
mold remediation, interior demolition

*Performs lead clean-up work:* interior dust,  
exterior dust and paint chips

*Contact:* Paul Chelstowski, President

*Phone:* (925) 969-9200

*Fax:* (925) 969-9290

*E-mail:* paulc@januscorp.com

### JC Painting

1911 Treewood Ln.  
San Jose, CA 95132

*Years in business:* 10

*Service areas:* 408

*Services:* painting

*Contact:* Chong B. Jwa, Owner

*Phone:* (408) 956-0340

*Fax:* (408) 956-8090

### JRP Painting

1291 Parkway Dr.  
Richmond, CA 94803

*Years in business:* 10

*Service areas:* 415, 510, 650, 925

*Services:* painting

*Contact:* Wanda Richardson,  
Office Manager

*Phone:* (510) 223-6105

*Fax:* (510) 223-6105

*E-mail:* jrppainting@pacbell.net

*Website:* www.jrppainting.com

### Kellco Services, Inc.



3137 Diablo Ave.  
Hayward, CA 94545

*Years in business:* 15

*Service areas:* 408, 415, 510, 650, 925

*Services:* environmental (asbestos/lead),  
risk assessment/paint inspection,  
lab analysis, mold, indoor air quality

*Contact:* Tim Cannard, VP,  
Senior Project Manager

*Phone:* (510) 786-9751

*Fax:* (510) 786-9625

*E-mail:* mailbox@kellco.com

*Website:* www.kellco.com

## Kelley Painting & Waterproofing



190 Coleman Dr.  
San Rafael, CA 94901

*Years in business:* 20  
*Service areas:* 415, 650  
*Services:* painting  
*Languages:* Spanish

*Contact:* Mr. Kim Kelley, Owner  
*Phone:* (415) 456-0951  
*Fax:* (415) 456-5398  
*E-mail:* kpandw@aol.com

## LVI Environmental Services, Inc.



3004-I Alvarado St.  
San Leandro, CA 94577

*Years in business:* 12  
*Service areas:* 408, 415, 510, 650, 925  
*Services:* environmental (asbestos/lead)  
*Performs lead clean-up work:* interior dust,  
exterior dust and paint chips  
*Languages:* Spanish

*Contact:* Tami Casey,  
Business Development Manager  
*Phone:* (510) 357-5390  
*Fax:* (510) 357-4506  
*E-mail:* tcasey@lvisservices.com  
*Website:* www.lvisservices.com

## Manos Janitorial Cooperative



2869 38<sup>th</sup> Ave.  
Oakland, CA 94619

*Years in business:* 14  
*Service areas:* 510, 925  
*Services:* lead cleaning  
*Performs lead clean-up work:* interior dust  
*Languages:* Spanish

*Contact:* Otto Rodriguez, Manager  
*Phone:* (510) 534-8578  
*Fax:* (510) 534-0446  
*E-mail:* ottrdrgz@aol.com

## Nova Abatement & Construction Services, Inc.



3051 Research Dr.  
Richmond, CA 94806

*Years in business:* 2.5  
*Service areas:* 408, 415, 510, 650, 925  
*Services:* environmental (asbestos/lead),  
home maintenance & repair,  
soil removal, mold  
*Performs lead clean-up work:* interior dust,  
exterior dust and paint chips  
*Languages:* Spanish

*Contact:* Stephen Schwartz, Vice President  
*Phone:* (510) 669-0256  
*Fax:* (510) 223-1750  
*E-mail:* sschwart@pacbell.net



### **Peanuts for Painting! A California Corporation**

6144 Valley View Rd.  
Oakland, CA 94611

*Years in business:* 21

*Service areas:* 408, 415, 510, 650, 925

*Services:* environmental (asbestos/lead), remodeling,  
painting, home maintenance & repair,  
waterproofing

*Performs lead clean-up work:* interior dust,  
exterior dust and paint chips

*Languages:* Spanish, Arabic



*Contact:* Fred J. Schmidt, President

*Phone:* (415) 346-7107

*Fax:* (510) 338-0092

*E-mail:* fstpnut@aol.com

### **Professional Services Company**

3145 Geary Blvd., #36  
San Francisco, CA 94118

*Years in business:* 10

*Service areas:* 415, 650, 510, 925

*Services:* remodeling, painting

*Contact:* George Lee, Director

*Phone:* (415) 788-2280

*Fax:* (415) 399-0338

*E-mail:* gleepsail@usa.net

### **Quality Asbestos Control, Inc.**



33364 Dowe Ave.  
Union City, CA 94587

*Years in business:* 15

*Service areas:* 408, 415, 510, 650, 925

*Services:* environmental (asbestos/lead),  
mold remediation

*Performs lead clean-up work:* interior dust,  
exterior dust and paint chips

*Contact:* Joseph McCurdy, Vice Pres.

*Phone:* (510) 475-7080

*Fax:* (510) 475-7445

*E-mail:* qacinc@netgate.net

### **R. B. Construction, Inc.**



893 Boggs Terrace  
Fremont, CA 94539

*Years in business:* 11

*Service areas:* 408, 415, 510, 650, 925

*Services:* environmental (asbestos/lead), soil removal

*Performs lead clean-up work:* interior dust,  
exterior dust and paint chips

*Languages:* Spanish

*Contact:* Christopher L. Luengo,  
Project Manager/Corp. Sec.

*Phone:* (510) 683-8780

*Fax:* (510) 683-8782

*E-mail:* rbconst@pacbell.net



## Rhapsody Painting & Environmental Services, Inc.

850 South Van Ness Ave. #25  
San Francisco, CA 94110

*Years in business:* 8

*Service areas:* 408, 415, 510, 650, 925

*Services:* environmental (lead), painting,  
window replacement, soil removal

*Performs lead clean-up work:* interior dust,  
exterior dust and paint chips

*Languages:* Spanish



*Contact:* Joseph Ruiz,  
Field Superintendent

*Phone:* (415) 824-5010

*Fax:* (415) 824-5040

*Cell:* (415) 720-4474

*E-mail:* rhapsody77@sbcglobal.net

## Schinman Painting



124 27<sup>th</sup> St.  
San Francisco, CA 94110

*Years in business:* 12

*Service areas:* 415, 650

*Services:* painting

*Performs lead clean-up work:* interior dust,  
exterior dust and paint chips

*Contact:* Phil Schinman, Owner

*Phone:* (415) 282-8946

*Fax:* (415) 282-8946

*E-mail:* phil@schinmanpainting.com

*Website:* www.schinmanpainting.com

## S.R.H. Construction



15213 Edgemoor St.  
San Leandro, CA 94579

*Service areas:* 408, 415, 510, 650, 925

*Services:* environmental (asbestos/lead),  
remodeling, painting, window replacement

*Performs lead clean-up work:* interior dust,  
exterior dust and paint chips

*Languages:* Spanish

*Contact:* Sergio R. Hernandez,  
President

*Phone:* (510) 459-8057

*E-mail:* hernand409@aol.com

## Southwest Hazard Control, Inc.



712 Whitney St.  
San Leandro, CA 94577

*Service areas:* 408, 415, 510, 650, 925

*Services:* environmental (asbestos/lead)

*Performs lead clean-up work:* interior dust,  
exterior dust and paint chips

*Languages:* Spanish

*Contact:* Mike Hegarty, Division Mngr.

*Phone:* (510) 352-5152

*Fax:* (510) 352-5155

*E-mail:* mixalis@msn.com

*Website:* www.swhaz.com



## Spring Friedlander Remodeling

434 – 66<sup>th</sup> St.  
Oakland, CA 94609

*Service areas:* 510, 925

*Services:* remodeling, painting,  
home maintenance & repair,  
window replacement, plastering,  
termite repair

*Contact:* Spring Friedlander, Owner

*Phone:* (510) 652-7600

*Fax:* (510) 652-9817

*E-mail:*

SpringFriedlander@worldnet.att.net

## Stahlschmidt Painting & Restoration



1446 Scenic Ave.  
Berkeley, CA 94708

*Years in business:* 15

*Service areas:* 510

*Services:* painting

*Languages:* Spanish, German

*Contact:* Hans Stahlschmidt, Owner

*Phone:* (510) 848-4040

*Fax:* (510) 848-4040

*E-mail:* stahlschmidt@attbi.com

## Synergy Environmental Inc.



28436 Satellite St.  
Hayward, CA 94545

*Years in business:* 17

*Service areas:* 408, 415, 510, 650, 925

*Services:* environmental (asbestos/lead)

*Performs lead clean-up work:* interior dust,  
exterior dust and paint chips

*Languages:* Spanish

*Contacts:* Sal Vaccard, President

Peter Landre, Estimator

*Phone:* (510) 259-1700

*Fax:* (510) 259-1715

*E-mail:* plandre@synergycompanies.org

## Waters Caldwell & Associates, Inc.



PMB #682  
909 Marina Village Parkway  
Alameda, CA 94501

*Years in business:* 6

*Service areas:* 415, 650, 510, 925

*Services:* environmental (asbestos/lead)

*Performs lead clean-up work:* interior dust,  
exterior dust and paint chips

*Languages:* Spanish

*Contacts:* Gloria Waters, President

Jacqueline Caldwell, VP

*Phone:* (510) 865-5089

*Fax:* (510) 865-5091

**Z-CON Speciality Services, Inc.**



1780-K Old Bayshore Rd.  
San Jose, CA 95112

*Contact:* David Zanotti, President

*Phone:* (408) 451-9512

*Fax:* (408) 451-9514

*E-mail:* zconssi@aol.com

*Years in business:* 10

*Service areas:* 408, 415, 510, 650, 925

*Services:* environmental (asbestos/lead)

*Performs lead clean-up work:* interior dust,  
exterior dust and paint chips

*Languages:* Spanish



## Resources

The Alameda County Lead Poisoning Prevention Program has information about lead poisoning prevention and safe lead hazard reduction as well as services for families and property owners. Call our public information line at 510-567-8280 or visit our website at [www.aclppp.org](http://www.aclppp.org).

If you do not live in Alameda County, the following is a list of other county lead programs in the Bay Area:

- ◆ Contra Costa County  
Lead Poisoning Prevention Project  
(510) 231-8500
- ◆ San Francisco County  
Childhood Lead Prevention Program/Children's Environmental Health  
(415) 554-8930
- ◆ Santa Clara County  
Public Health Department, Childhood Lead Poisoning Prevention Program  
(408) 793-6440

### The following websites may also be helpful:

Alliance to End Childhood Lead Poisoning	<a href="http://www.aeclp.org">www.aeclp.org</a>
CDC Childhood Lead Poisoning Program	<a href="http://www.cdc.gov/nceh/lead">www.cdc.gov/nceh/lead</a>
Contractors State License Board	<a href="http://www.cslb.ca.gov">www.cslb.ca.gov</a>
Environmental Protection Agency Lead Page	<a href="http://www.epa.gov/lead">www.epa.gov/lead</a>
HUD Office of Lead Hazard Control	<a href="http://www.hud.gov/offices/lead">www.hud.gov/offices/lead</a>
National Lead Information Center	<a href="http://www.nsc.org/ehc/lead.htm">www.nsc.org/ehc/lead.htm</a>
State of California Department of Health Services	
Childhood Lead Poisoning Prevention Branch	<a href="http://www.dhs.ca.gov/childlead">www.dhs.ca.gov/childlead</a>
Occupational Lead Poisoning Prevention Branch	<a href="http://www.dhs.cahwnet.gov/ohb/olppp">www.dhs.cahwnet.gov/ohb/olppp</a>
University of Minnesota Extension (Lead in Soil)	
<a href="http://www.extension.umn.edu/distribution/horticulture/DG2543.html">www.extension.umn.edu/distribution/horticulture/DG2543.html</a>	

This project was funded by the Alameda County Lead Poisoning Prevention Program and the Joint Powers Authority, representing the cities of Oakland, Berkeley, Alameda, and Emeryville.

*Special thanks to:*

Denise Nguyen, Julie Twichell, Doug Henderson, Dale Hagen, and Peter Belanger at the ACLPPP, and Russell Stowe at California Department of Health Services for their insights and contributions to this project.

*Booklet design by WinterGraphics*

*If your company would like to be included in the fourth edition,  
please call (510) 567-8280*

The Alameda County Lead Poisoning Prevention Program  
2000 Embarcadero, Suite 300  
Oakland, CA 94606  
(510) 567-8280  
[www.aclppp.org](http://www.aclppp.org)